

Edge AI



Filling the Cracks



Husqvarna

1339 AiLab
Husqvarna Group



Girish Kumar Agarwal

Director AiLab

LinkedIn: [linkedin.com/in/girishkumaragarwal](https://www.linkedin.com/in/girishkumaragarwal)

Twitter: twitter.com/Agarwalgirish

Introduction

Self & Husqvarna
Digital Journey & AiLab

Edge AI

Market, Projects
Learnings

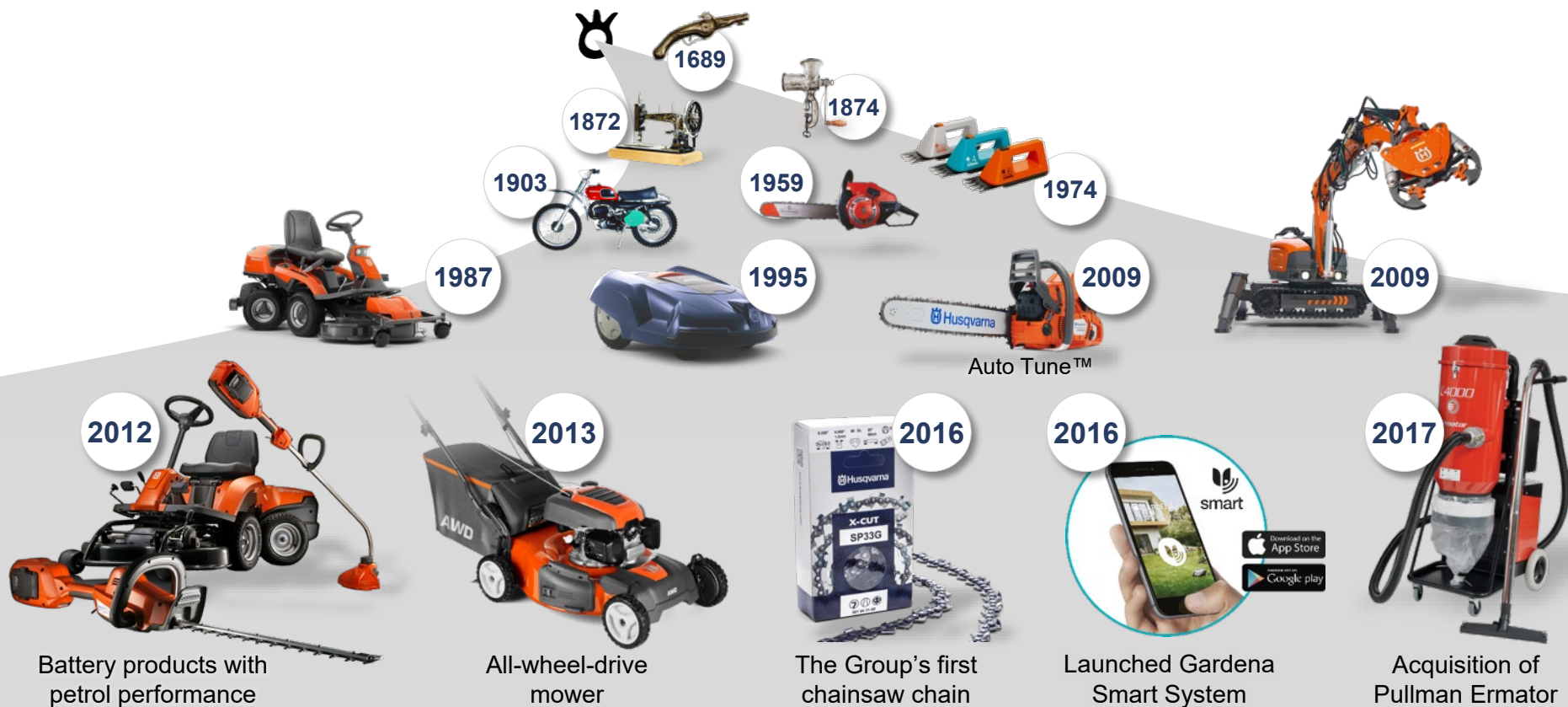
Edge: Filling the Cracks

Capability Mapping
Value Identification

Conclusion

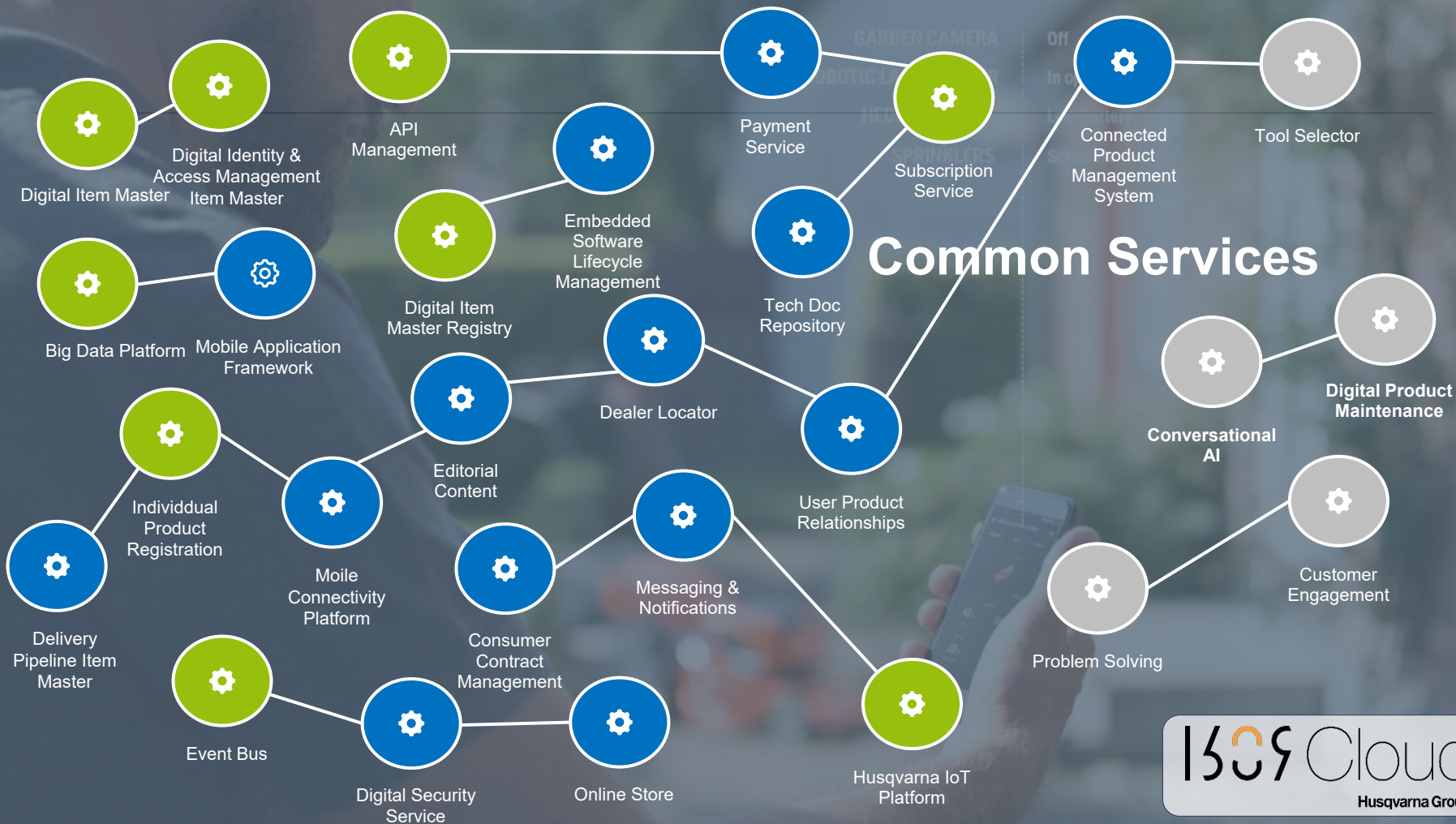
Chase the unobvious
Be part of our journey

330 years of innovation





Digital Strategy : Roadmap
Connectivity
Speed Boats
Advent of Digital Service Platform



Our foundational pillars for digital transformation





User Community



Universities

Lab Concept

Beta
Service

Beta
Service



Start Ups



Partners

Branding Framework

- Talent Acquisition & Retention



Legal Framework

- Terms & Conditions
- Privacy trade-offs

Digital Services Platform

- Artificial Intelligence
- Sandboxes
- Big Data Analytics
- Open APIs
- Developer Portal

Organization

- Operational
- Ideation & Research
- Start-up Team
- COE
- Core Competence

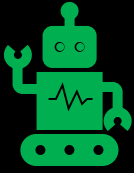


machine intelligence in action

1539 AI Lab
Husqvarna Group



Satellite Data



Robotics



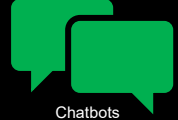
Audio Analysis



Text Mining



Image Analytics



Chatbots



Hyper Personalization



Autonomous



Vision Systems



Prediction Systems



Customer Interactions



Hand Gestures



Simulation & Digital Twin



Labs ML



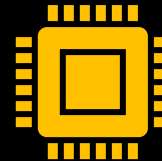
Edge AI



Natural Language
Processing



Deep Learning



Soft Sensors



AR / VR



Satellite Data



Robotics



Audio Analysis



Text Mining



Image Analytics



Chatbots



Hyper Personalization



Autonomous



Vision Systems



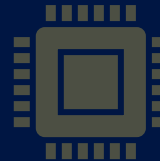
Hand Gestures



Simulation & Digital Twin



Labs ML



Soft Sensors



Prediction Systems



Customer Interactions



Edge AI



Natural Language Processing



Deep Learning



AR / VR

2018 Edge Computing Index: 4 Key Statistics About Edge Computing



73%

The number of companies in the process of implementing, or having already implemented an edge computing strategy.



93.3%

The number of companies intending to invest in edge computing in the next 12 months.



72%

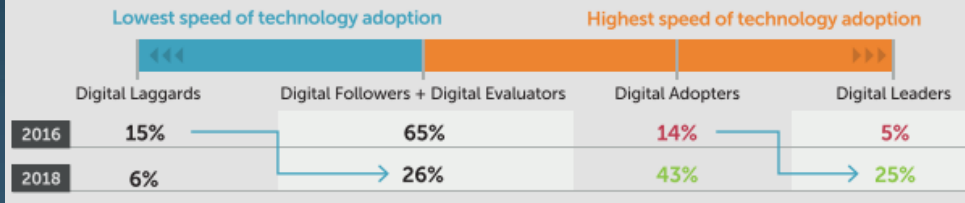
Organizations believing that their edge strategy is either critically or very important to improve business processes and productivity.



64%

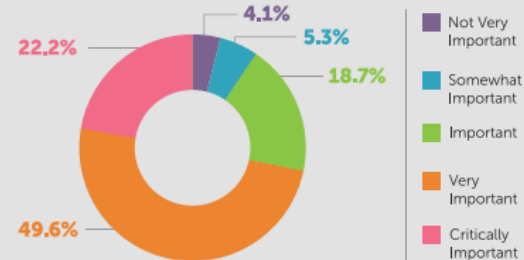
Companies already combining edge computing and data center analytics.

2016-2018 Shifts Along The Digital Laggard to Digital Leadership Scale

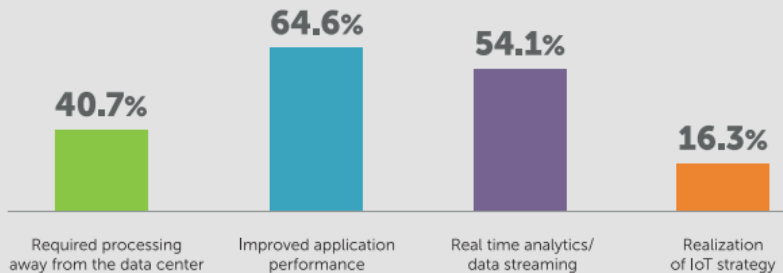


While companies are adopting EDGE, few are aiming HIGH !!

How important is your edge computing strategy to obtaining and utilizing data streams to improve business processes and productivity



Why is Edge Computing important for your business?





Input:

- Current
- Temperature
- Impedance

Prediction:

- Remaining Useful Life
- Battery Remaining Life

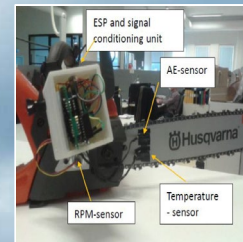


Input:

- Throttle Angle
- Engine Speed

Prediction:

- State of the Machine
- Number of Fallen Trees



Input:

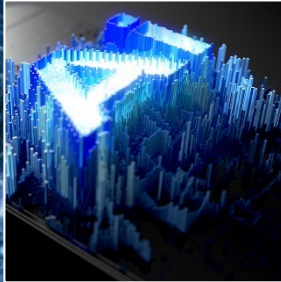
- Acoustic Emission
- Temperature
- RPM

Prediction:

- Lubrication requirement with quantities

Accuracy: 88 – 96%
Footprint: M4 or less with 10 to 200 KB

**Take First
Step
.....Aim End**



**Talent is
Scare,
identify
workarounds**



**Just
scratching
the Surface**

**Do not chase
the Obvious**



**Prepare for
Battle**



**Do not
re-invent**

**Customer's
Imperative**



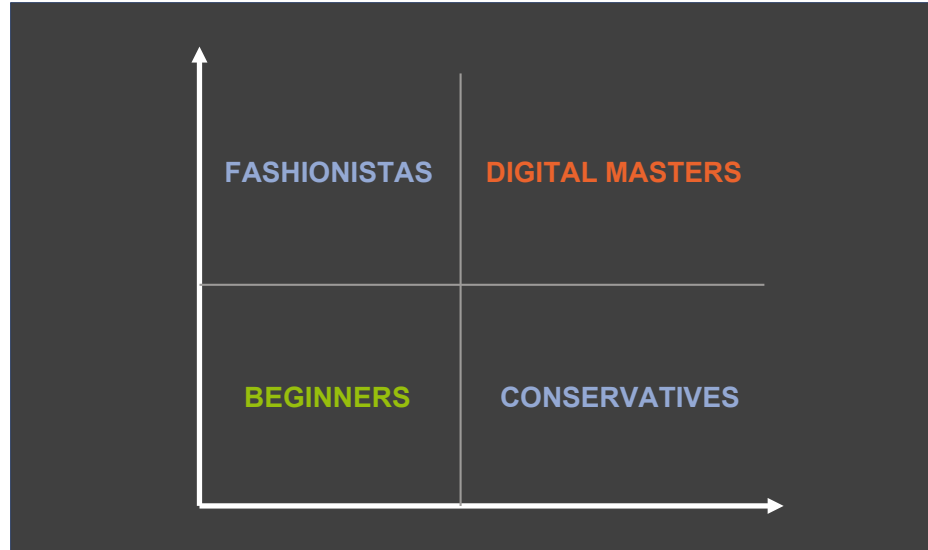
EDGE growing spirally outwards



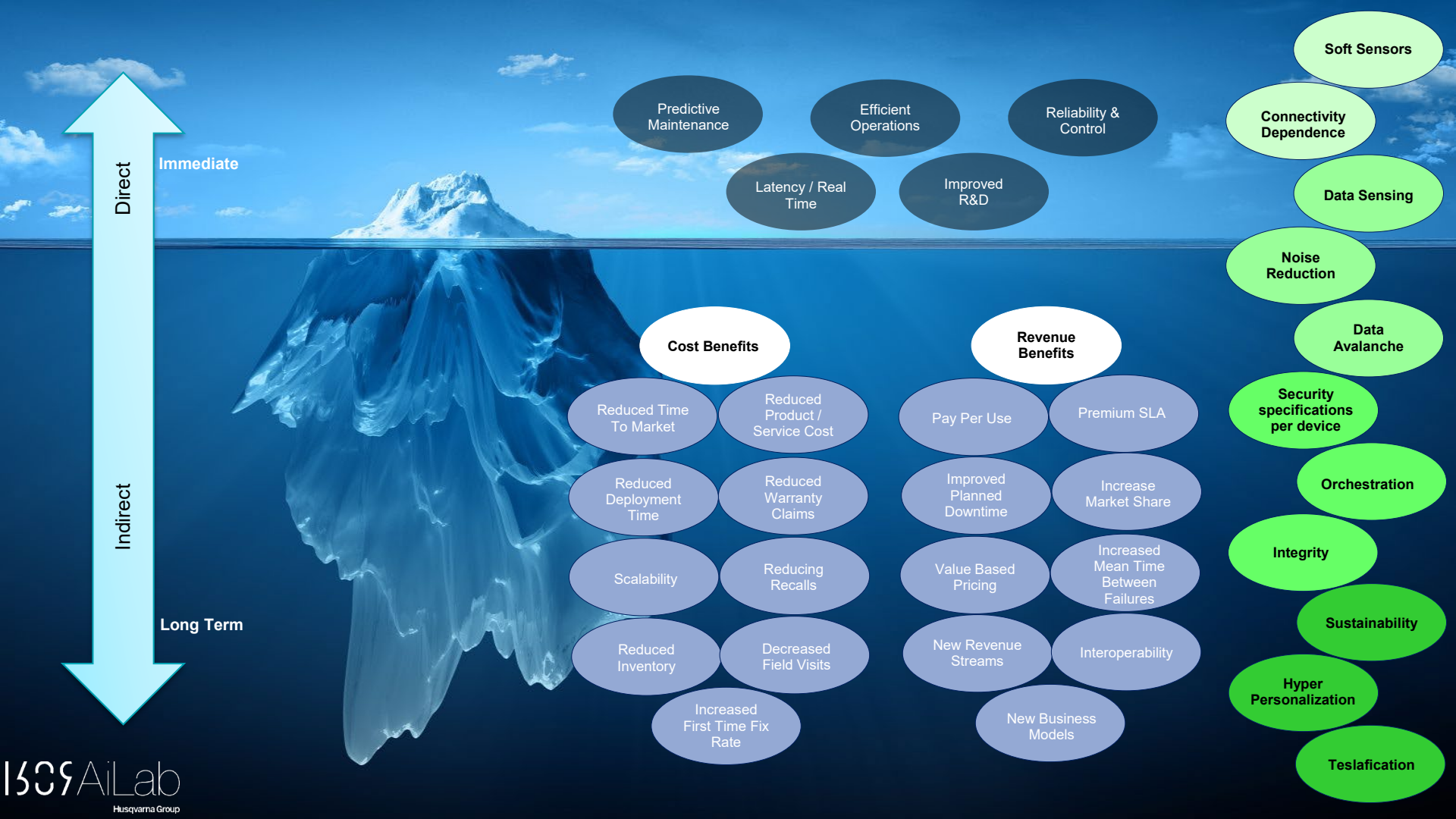


Become a Digital Master

Digital Mastery Framework

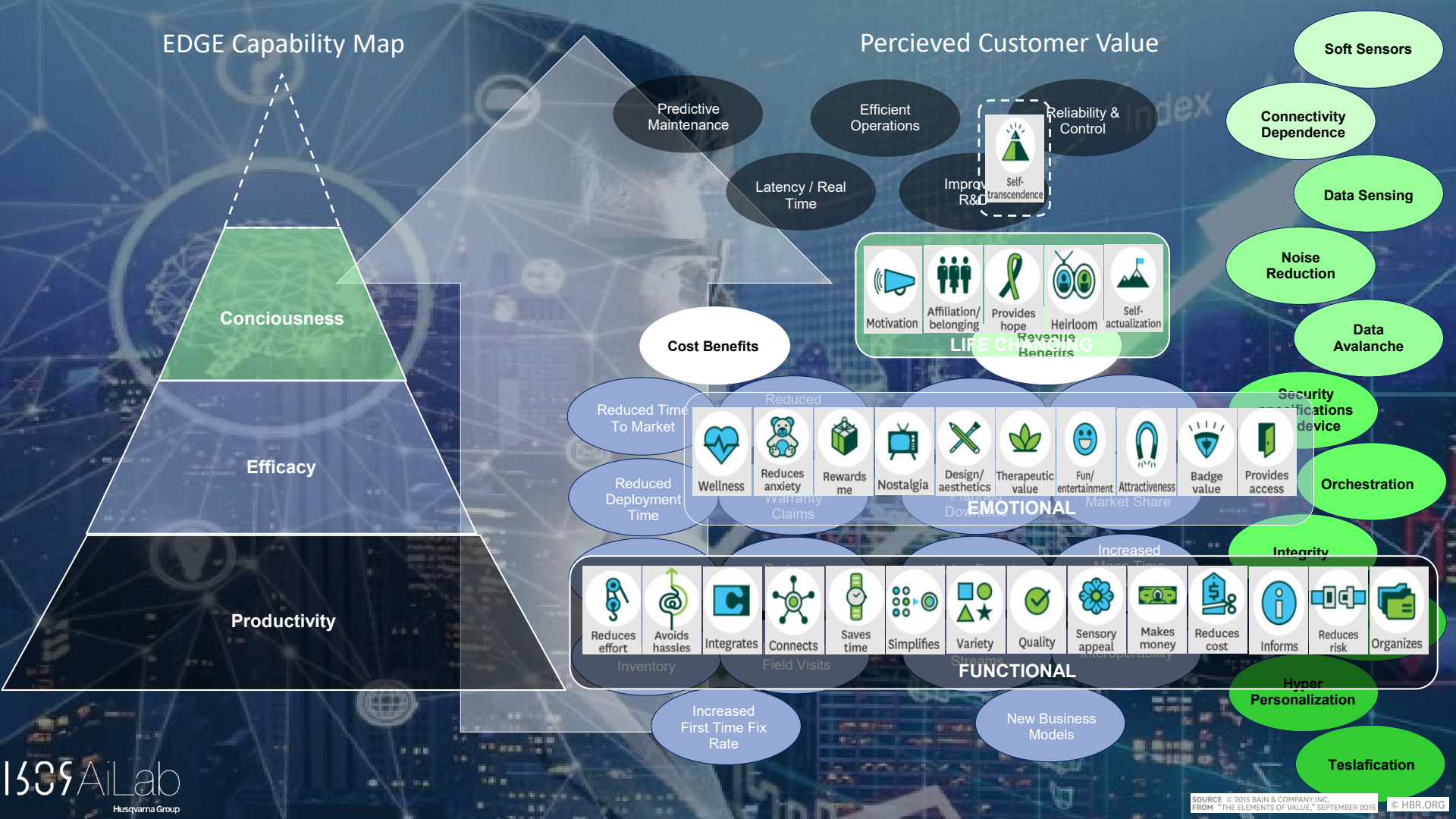


Digital Mastery: **Digital** capabilities and **Leadership** capabilities



EDGE Capability Map

Percieved Customer Value



what's the
opposite of
unobvious?

obvious, apparent, evident,
manifest, patent, plain,
unmistakable, transparent,
axiomatic, self-evident





Husqvarna®

www.husqvarnagroup.com

Seeking for Partners...



Thank You !!!